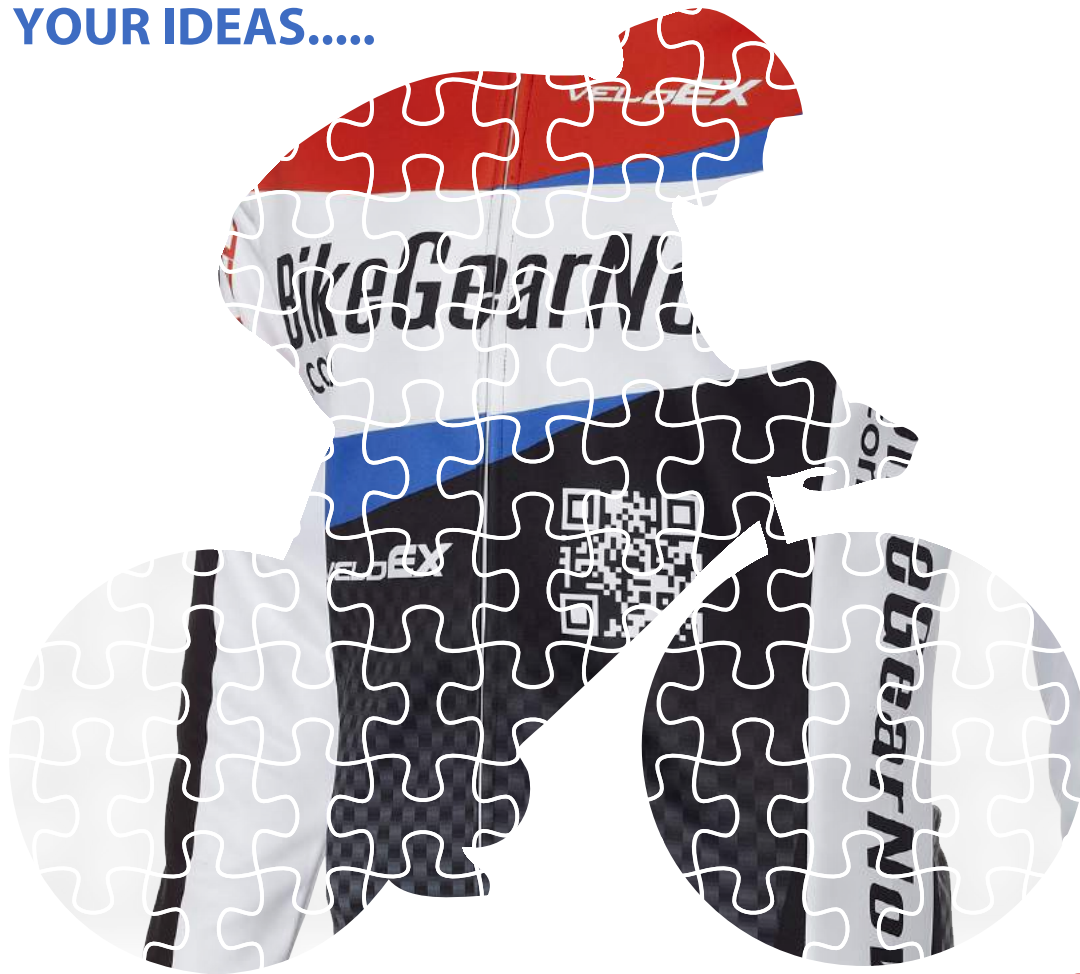


**VELODEX**

## CUSTOM CYCLE KIT CATALOGUE 2018

FROM YOUR IDEAS.....



.....TO YOUR KIT

- \* 6 Easy Steps
- \* 3 Ranges
- \* All the Kit You Want

TO CREATE YOUR UNIQUE CYCLE KIT at [www.bikegearnow.com](http://www.bikegearnow.com)

Need to talk to us

We are only a phone call away

**0418 382 330**

## getting started

### EASY SIX STEP PLAN

#### contact us

Drop us an email to [bikegearnow@gmail.com](mailto:bikegearnow@gmail.com), or phone **0418 382 330**, telling us briefly what you want. We will get back to you usually the same day, to start things rolling. After paying \$200 deposit, (deducted from your final Invoice), we can get your design started

#### design guidelines

Send any details you already have & fill in a Design Guidelines Form, found later in this Guide when you download it, to help you create a great design. After we send you an initial design or two, send us your comments for any changes, several times if needed, as we move to exactly what you want. Sizing samples available if required

#### design

As your kit comes to life, the final design starts to emerge. Colours, logos & other features can be included, to ensure you are happy with the result. If you want more input, download our Design Templates on Pages 18 and design away! Remember we are here to help whenever you need. If you prefer Templates in a different format, please advise.

#### approve

It is time to approve the artwork and confirm what items you want to order. We will send an Invoice so you know exactly what it will all cost. Delivery is free anywhere and GST is included (beware if comparing prices, as both GST and delivery are often excluded in their small print)

#### production

On payment of a further 50% of your Invoice, we schedule your order for production with a delivery time within 4-5 weeks. Your final payment is due just prior to delivery and once received, we arrange shipping to your preferred address

#### go for a ride

Now the fun part. On your bike and show it to the world. This is always the best part. Enjoy!

- \* **6 Easy Steps**
- \* **3 Ranges**
- \* **All the Kit You Want**

TO CREATE YOUR UNIQUE CYCLE KIT at [www.bikegearnow.com](http://www.bikegearnow.com)

Need to talk to us

We are only a phone call away

**0418 382 330**

contact us

We have three different ranges available to suit and can advise of the benefits of each.

**EVENT RANGE**

Typically for those taking part in events such as Great Victorian Bike Ride our Event Range is a great choice. These well-priced, quality garments will help you enjoy your event whilst identifying you with your own unique look, on your cycling journey. There is no compromise on artwork, with unlimited colours and design, making sure you look great at all times, whilst remaining comfortable too, in our range of modern, high-wicking fabrics.

**PRO RANGE**

Many Cycling Clubs, Corporates and Private Groups of any size like to move up a level, where long hours in the saddle are common and a tight-fitting aero range is preferred. Many cyclists following the Tour Down Under and similar high profile events choose this range along with a number of Australia's high profile Cycling Clubs. Our Pro Range represents great quality and performance at a great value price-point.

**PREMIUM RANGE**

Where performance and good looks are your goal, our Premium Range is right at the pointy end of quality cycle wear. Think Italian Pads and fabrics, including our highly regarded Chrono fabric, attention to detail, yet still with low minimum order quantities.

For those used to high-end cycling apparel, this is your range.

Once you advise by email to [bikegearnow@gmail.com](mailto:bikegearnow@gmail.com) that you would like to proceed, we will provide payment details for your \$200 Deposit, which is deducted from your final payment. Once we receive your Deposit, we can make a start. And remember, we do not charge for artwork or delivery and GST is included in our prices. The price we quote is the price you pay.

- \* **6 Easy Steps**
- \* **3 Ranges**
- \* **All the Kit You Want**

TO CREATE YOUR UNIQUE CYCLE KIT at [www.bikegearnow.com](http://www.bikegearnow.com)

Need to talk to us

We are only a phone call away

**0418 382 330**

design guidelines

We understand that often it is hard to know where to start and that is why we have developed our 6 step process.

We can work with any information you already have, from hand-drawn sketches through to full graphics files. To help you along the way, please feel free to complete details in the following Design Guidelines and print off just this page to return to us. In addition, unlike many online businesses, we are very happy to personally discuss your needs.

**DESIGN GUIDELINES** Your Name \_\_\_\_\_

Item	Must Have	Like To Have	Must Avoid
<b>Information</b> Can consist of specific words. (e.g. Business Description, Group or Club Name) Logos or diagrams			
<b>Colours</b> Unlimited and often influenced by logo colours and your unique design look Samples available			
<b>Information</b> Are there any specific locations where you require any of your information. We can assist on the layout, for best visual effect and advise what to avoid			

- \* **6 Easy Steps**
- \* **3 Ranges**
- \* **All the Kit You Want**

TO CREATE YOUR UNIQUE CYCLE KIT at [www.bikegearnow.com](http://www.bikegearnow.com)

Need to talk to us

We are only a phone call away

**0418 382 330**

**design**

This is where your design starts to emerge, as we work with you to develop your unique cycling look. It may take more than one design before you are completely satisfied. Colours, and design elements can be added, removed, re-located and changed. The aim is to get to a design that fully meets your goals. After all, why shouldn't we all look and feel great. This means your feedback from the first design will help guide us to exactly what you want. We have the design skills and anything can be changed.

You will get to see your design come to life, incorporating your ideas and our guidance, to bring everything together. Of course, if you prefer to provide full graphic design files, we can supply templates for you. Whether it takes just one design or several, this really is a critical stage, where changes can be tried and fine-tuned, before you make the final decision on your unique cycling look.

- \* **6 Easy Steps**
- \* **3 Ranges**
- \* **All the Kit You Want**

TO CREATE YOUR UNIQUE CYCLE KIT at **[www.bikegearnow.com](http://www.bikegearnow.com)**

Need to talk to us

We are only a phone call away

**0418 382 330**

approve

Once you are completely happy with your design, please email which version you want to order to [bikegearnow@gmail.com](mailto:bikegearnow@gmail.com). The Version Number is at the end of the file name e.g. *yournameV02.jpg*

We will then send you a Print File to approve. **IT IS CRITICAL** that you check this Print File **VERY CAREFULLY**. Any errors that are missed here will print.

Please check spelling, names, in fact everything you can. We do our best, but are unable to accept responsibility for any errors you may miss. If a name or word is spelt incorrectly, it will print.

Once this file is approved, no further changes can be made.

Size	Event Jersey	Pro Jersey	Premium Jersey	Bib Knicks	Std Knicks	Wind Vests	Arm Warmers	Jackets	Other Items Please specify
<b>2XS</b>									
<b>XS</b>									
<b>S</b>									
<b>M</b>									
<b>L</b>									
<b>XL</b>									
<b>2XL</b>									
<b>3XL</b>									
<b>4XL</b>									

- \* **6 Easy Steps**
- \* **3 Ranges**
- \* **All the Kit You Want**

TO CREATE YOUR UNIQUE CYCLE KIT at [www.bikegearnow.com](http://www.bikegearnow.com)

Need to talk to us

We are only a phone call away

**0418 382 330**

**production**

Once we receive a further payment of 40% of order value from you, production is scheduled, and to be completely fair, scheduling is strictly in order that payments are received.

If delivery time is not critical, please allow around 5 weeks for delivery.

If you require delivery by a specific date, please advise. It is always safer to allow additional time if delivery is required by a specific date, as unforeseen delays can occur, including Customs and Transport delays.

Because all apparel is manufactured off-shore, speeding up a delivery is not reliable. It is also far less stressful, if your order is placed earlier, knowing your order will arrive in plenty of time.

As soon as we receive notification that your order is ready, we will advise of your final payment arrangement and once that is complete, delivery will take around 5 days in most capital city areas and up to 15 days in more remote location.

- \* **6 Easy Steps**
- \* **3 Ranges**
- \* **All the Kit You Want**

TO CREATE YOUR UNIQUE CYCLE KIT at **[www.bikegearnow.com](http://www.bikegearnow.com)**

Need to talk to us

We are only a phone call away

**0418 382 330**



## CUSTOM CYCLE KIT CATALOGUE 2018

go for a ride

This is what it is really all about. Time to Ride!

Slip into your new kit and head off on your own cycling journey. Your kit will last for many, many kilometres.

All it needs is you!

Happy Cycling

- \* **6 Easy Steps**
- \* **3 Ranges**
- \* **All the Kit You Want**

TO CREATE YOUR UNIQUE CYCLE KIT at [www.bikegearnow.com](http://www.bikegearnow.com)

Need to talk to us

We are only a phone call away

**0418 382 330**



## the range

### **CUSTOM RANGE**

Custom Clothing is the choice for a range of cycling activities, where participants want a unique look for their own cycling journey. Performance cyclists often prioritise lightweight, aero garments together with great looking designs.

Other groups prefer added comfort but still want quality, great looking kit and some aim for the highest of quality and European fabrics and influence.

Our three offerings reflect those differences. Whilst our unisex Event Range is guided by competitive pricing, both Men and Women are provided for, with gender-specific pads, cuts and styles, in both Pro and Premium Fit ranges.

### **EVENT RANGE**

The popular Event Range has been created for those looking for a more relaxed, comfortable fit. This range is an ideal choice for those contemplating a range of cycling activities, such as work-day commutes, community rides, or simply regular cycling enjoyment.

### **PRO RANGE**

The demands of competitive cyclists are for fitted race wear, incorporating lightweight, performance fabrics and aerodynamic benefits, making our Pro Range the perfect solution.

### **PREMIUM RANGE**

For more discerning cyclists, who want the best, this range, costing a little more, is ideal for those insisting on top quality but at a fair price. Italian fabrics, Pads, and Grippers are the hallmarks of premium cycle kit and our Premium Range delivers the full package.

- \* **6 Easy Steps**
- \* **3 Ranges**
- \* **All the Kit You Want**

TO CREATE YOUR UNIQUE CYCLE KIT at [www.bikegearnow.com](http://www.bikegearnow.com)

Need to talk to us

We are only a phone call away

**0418 382 330**

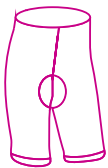
## event range

### SHORT SLEEVE JERSEYS

Each Event Range Jersey is crafted from nine individual panels of high-wicking, fully-printable fabric that is fade-free and long-lasting. These quick-drying jerseys are perfect for regular wear and allow generous room for a comfortable fit. Three generous rear pockets for plenty of storage and a full-length hidden zip complete this quality cycling jersey, making it the choice for many cycling activities. Each jersey incorporates the same high quality finish of our Race Range with less expensive fabrics

**SIZE RANGE**                      **2XS, XS, S, M, L, XL, 2XL, 3XL, 4XL**  
**STYLE**                                **UNISEX**

### KNICKS



Event Range Knicks are crafted from a mixture of elastane and polyester (commonly referred to as Lycra) to allow for ample stretch and the ability to return to it's original shape. Seven individual panels make up each garment in fully-printable fabric that is fade-free and long-lasting. Being quick-drying and wrinkle-free, they are an ideal aid to your cycling enjoyment, incorporating an extremely comfortable integrated pad and internal leg grippers to keep the knicks in an ideal cycling position

**SIZE RANGE**                      **2XS, XS, S, M, L, XL, 2XL, 3XL, 4XL**  
**STYLE**                                **MEN'S, WOMEN'S**

- \* 6 Easy Steps**
- \* 3 Ranges**
- \* All the Kit You Want**

TO CREATE YOUR UNIQUE CYCLE KIT at **[www.bikegearnow.com](http://www.bikegearnow.com)**

Need to talk to us

We are only a phone call away

**0418 382 330**

## event range

### BIB KNICKS



Event Range Bib Knicks are crafted from a mixture of elastane and polyester (commonly referred to as Lycra) to allow for ample stretch and the ability to return to its original shape. Multiple individual panels make up each garment in fully-printable fabric that is fade-free and long-lasting. Being quick-drying and wrinkle-free, they are an ideal aid to your cycling enjoyment, incorporating an extremely comfortable integrated pad and internal leg grippers to keep the knicks in an ideal cycling position

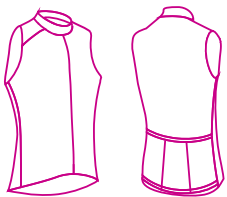
**SIZE RANGE**

**2XS, XS, S, M, L, XL, 2XL, 3XL, 4XL**

**STYLE**

**MEN'S, WOMEN'S**

### WIND VESTS (GILETS)



Our range of Wind Vests are one of the most useful items of cycling kit. The front is made of lightweight windproof fabric. Three rear pockets for added storage complete the features of this lightweight but effective wind vest, plus it can be folded and stored in your jersey pocket as the day warms up.

**SIZE RANGE**

**2XS, XS, S, M, L, XL, 2XL, 3XL, 4XL**

**STYLE**

**UNISEX**

- \* **6 Easy Steps**
- \* **3 Ranges**
- \* **All the Kit You Want**

TO CREATE YOUR UNIQUE CYCLE KIT at [www.bikegearnow.com](http://www.bikegearnow.com)

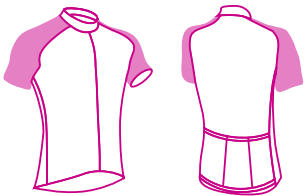
Need to talk to us

We are only a phone call away

**0418 382 330**

## pro range

### SHORT SLEEVE JERSEY



Short Sleeve Race Range Jersey with three rear pockets and rear silicone gripper. The fabric is high-wicking microfiber for comfort and breathability, with mesh side panels for additional air-flow. Lycra sleeves and full-length zips are standard and Jersey is fully-printable.

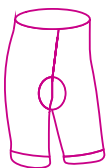
**SIZE RANGE**

**2XS, XS, S, M, L, XL, 2XL, 3XL, 4XL**

**STYLE**

**MEN'S, WOMEN'S**

### KNICKS



Race Range Knicks are crafted from a heavier elastene and polyester to allow for ample stretch but increased pressure. Seven individual panels make up each garment in fully-printable fabric that is fade-free and long-lasting. Being quick-dry and wrinkle-free, they are an ideal aid to cycling enjoyment, adding our premier pad and wide power leg grippers plus double thickness rear privacy panel

**SIZE RANGE**

**2XS, XS, S, M, L, XL, 2XL, 3XL, 4XL**

**STYLE**

**MEN'S, WOMEN'S**

- \* **6 Easy Steps**
- \* **3 Ranges**
- \* **All the Kit You Want**

TO CREATE YOUR UNIQUE CYCLE KIT at [www.bikegearnow.com](http://www.bikegearnow.com)

Need to talk to us

We are only a phone call away

**0418 382 330**

**pro range**

**BIB KNICKS**



Race Range Bib Knicks are crafted to the same high standards as Race Range Standard Knicks, are higher cut at the waist and incorporate shoulder straps which are increasingly common. These are the most popular knicks chosen for competition and are constructed from nine individual panels, including shoulder straps, combined with our premium pad and wide power leg grippers

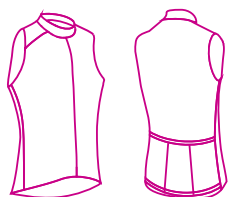
**SIZE RANGE**

**2XS, XS, S, M, L, XL, 2XL, 3XL, 4XL**

**STYLE**

**MEN'S, WOMEN'S**

**WIND VESTS (GILETS)**



Our range of Wind Vests are one of the most useful items of cycling kit. The front is made of lightweight windproof fabric. Three rear pockets for added storage complete the features of this lightweight but effective wind vest, plus it can be folded and stored in your jersey pocket as the day warms up.

**SIZE RANGE**

**2XS, XS, S, M, L, XL, 2XL, 3XL, 4XL**

**STYLE**

**UNISEX**

- \* 6 Easy Steps**
- \* 3 Ranges**
- \* All the Kit You Want**

TO CREATE YOUR UNIQUE CYCLE KIT at **[www.bikegearnow.com](http://www.bikegearnow.com)**

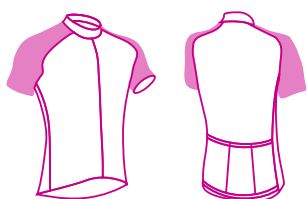
Need to talk to us

We are only a phone call away

**0418 382 330**

**premium range**

**SHORT SLEEVE JERSEY**



Short Sleeve Race Range Jersey with three rear pockets and rear silicone gripper. The fabric is high-wicking microfiber for comfort and breathability, with mesh side panels for additional air-flow. Lycra sleeves and full-length zips are standard and Jersey is fully-printable.

**SIZE RANGE**

**2XS, XS, S, M, L, XL, 2XL, 3XL, 4XL**

**STYLE**

**MEN'S, WOMEN'S**

**BIB KNICKS**



Race Range Bib Knicks are crafted to the same high standards as Race Range standard knicks, are higher cut at the waist and incorporate shoulder straps which are increasingly common. These are the most popular knicks chosen for competition and are constructed from nine individual panels, including shoulder straps, combined with our premium pad and wide power leg grippers

**SIZE RANGE**

**2XS, XS, S, M, L, XL, 2XL, 3XL, 4XL**

**STYLE**

**MEN'S, WOMEN'S**

- \* 6 Easy Steps**
- \* 3 Ranges**
- \* All the Kit You Want**

TO CREATE YOUR UNIQUE CYCLE KIT at [www.bikegearnow.com](http://www.bikegearnow.com)

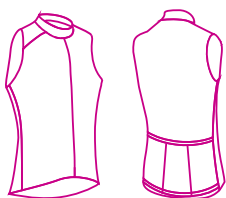
Need to talk to us

We are only a phone call away

**0418 382 330**

**premium range**

**WIND VESTS (GILETS)**



Our range of Wind Vests are one of the most useful items of cycling kit. The front is made of lightweight windproof fabric. Three rear pockets for added storage complete the features of this lightweight but effective wind vest, plus it can be folded and stored in your jersey pocket as the day warms up.

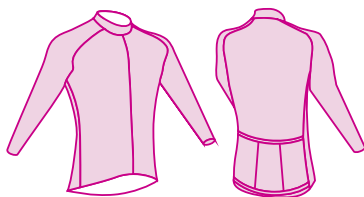
**SIZE RANGE**

**2XS, XS, S, M, L, XL, 2XL, 3XL, 4XL**

**STYLE**

**UNISEX**

**LONG SLEEVE JACKET-LIGHT FLEECE**



The lightweight Long Sleeve Jacket is ideal for cool winter conditions. Longer drying time due to heavier fabric, but great to stay warm when riding in cold weather or to keep the chill out post-event make this a great choice.

**SIZE RANGE**

**2XS, XS, S, M, L, XL, 2XL, 3XL, 4XL**

**STYLE**

**MEN'S, WOMEN'S**

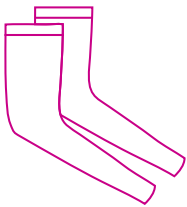
- \* 6 Easy Steps**
- \* 3 Ranges**
- \* All the Kit You Want**

TO CREATE YOUR UNIQUE CYCLE KIT at [www.bikegearnow.com](http://www.bikegearnow.com)

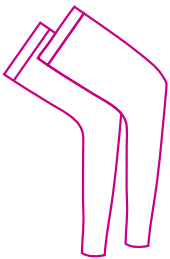
Need to talk to us

We are only a phone call away

**0418 382 330**

**accessories****ARM WARMERS LYCRA LIGHTWEIGHT**

Tight-fitting full printed Lycra Arm Warmers, suitable for cool days, with top internal grippers to hold them in place, these Arm Warmers fold into small bundle to easily fit into a rear pocket if it warms up whilst you are out.

**SIZE RANGE****XS, S, M, L, XL, 2XL****STYLE****UNISEX****LEG WARMERS LYCRA LIGHTWEIGHT**

Tight-fitting full printed Lycra Leg Warmers, with top internal grippers to hold them in place, are suitable for cool days. These Leg Warmers fold into small bundle to fit into a rear pocket if it warms up whilst you are out. Short zips near ankles for easy removal

**SIZE RANGE****XS, S, M, L, XL, 2XL****STYLE****UNISEX**

- \* 6 Easy Steps**
- \* 3 Ranges**
- \* All the Kit You Want**

TO CREATE YOUR UNIQUE CYCLE KIT at **[www.bikegearnow.com](http://www.bikegearnow.com)**

Need to talk to us

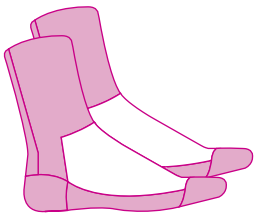
We are only a phone call away

**0418 382 330**



## accessories

### CYCLING SOCKS



Australian made quality Cycling Socks with Coolmax, for greater comfort when cycling. Can be made to desired length with Minimum Order Quantity 80 pairs in different sizes. Typical order is 20% 13-3, 60% 2-8 and 20% 7-11. The nature of socks means simple designs work well. Complex designs are unsuitable. Please enquire.

**SIZE RANGE** 13-3, 2-8, 7-11, 10-14 **Min Qty 80 prs mixed**  
**STYLE** UNISEX

### NON-STANDARD APARELL

We have only included the most popular items here, but welcome your enquiries about other aparell of interest, including a range of Tri Kit developed with local Tri Clubs, in a full range of sizes.

- \* **6 Easy Steps**
- \* **3 Ranges**
- \* **All the Kit You Want**

TO CREATE YOUR UNIQUE CYCLE KIT at [www.bikegearnow.com](http://www.bikegearnow.com)

Need to talk to us

We are only a phone call away

**0418 382 330**

## pricelist

PRODUCT	DESCRIPTION	Incl GST. Artwork & Delivery				
		QTY				
		2	5	10	20	50
<b>Jerseys</b>						
Jerseys-Short Sleeve-Event	Polyester, Q/Dry Fabric, Full Zip, UV Protection	125.00	85.00	72.00	65.00	61.00
Sleeveless Jerseys-Event	Polyester, Q/Dry Fabric, Full Zip, UV Protection	125.00	85.00	72.00	65.00	61.00
Short Sleeve Jersey-Pro	Polyester Q/Dry CoolSport Fabric, Full Zip, Mesh SidePanels, Rr Gripper, UV Protec	135.00	95.00	82.00	75.00	71.00
Short Sleeve Jersey-Premium	Polyester Q/Dry Chrono Fabric, Full Zip, Mesh SidePanels, Rr Gripper, UV Protectn	N/A	N/A	98.00	92.00	88.00
<b>Knicks</b>						
Knicks-Regular-Event	Lycra, Leg Grippers, Quality Long Distance Pad	145.00	105.00	92.00	85.00	81.00
BibKnicks-Event	Lycra, Leg Grippers, Quality Long Distance Pad	145.00	105.00	92.00	85.00	81.00
BibKnicks-Pro	Lycra, Leg Grippers, Quality UltraDense Pad-great for even long rides	151.00	112.00	98.00	92.00	88.00
BibKnicks-Premium	Lycra, Italian Miti Wide Leg Grippers & DrPad Chamois-great for even long rides	N/A	N/A	137.00	130.00	127.00
<b>Skin Suits</b>						
S/Sleeve & L/Sleeve Pro	Lycra, Wide Leg Grippers, Quality UltraDense Pad-great for long rides	202.00	162.00	149.00	142.00	139.00
S/Sleeve& L/Sleeve Premium	Lycra, Italian Miti Wide Leg Grippers & DrPad Chamois-great for even long rides	273.00	234.00	220.00	214.00	211.00
<b>Cycling Jackets &amp; Vests</b>						
Wind Vest	100% Polyester, wind proof, water proof	116.00	76.00	63.00	57.00	52.00
Long Sleeve Jersey	Fleece Lined-Light Duty, Full Zip	135.00	95.00	82.00	75.00	71.00
Fleece L/Sleeve Jkt-Pro	Fleece Lined-Light Duty, Full Zip	148.00	108.00	95.00	88.00	84.00
Fleece L/Sleeve Jkt-Premium	Italian Fleece, Medium Duty, Full Zip	N/A	N/A	168.00	161.00	157.00
<b>Cycling Accessories-Only available at these prices in conjunction with main clothing order-Otherwise POA</b>						
Lycra Arm Warmers	Nylon/Elastane, Full Custom Print with Jerseys & Knicks Only	43.00	40.00	39.00	38.00	37.00
Lycra Knee Warmers	Nylon/Elastane, Full Custom Print with Jerseys & Knicks Only	50.00	47.00	46.00	45.00	44.00
Lycra Leg Warmers	Nylon/Elastane, Full Custom Print with Jerseys & Knicks Only	41.00	41.00	41.00	41.00	40.00
Lycra Shoe Covers	Nylon/Elastane, Full Custom Print with Jerseys & Knicks Only	43.00	40.00	39.00	38.00	37.00
Cycling Socks	Polyester-Coolmax Australian Made	Min. 100 pairs @ \$ 8.00 per pair, 3 Mixed Sizes				
Fleece Arm Warmers	Nylon/Elastane, Full Custom Print with Jerseys & Knicks Only	53.00	50.00	49.00	48.00	47.00
Fleece Knee Warmers	Nylon/Elastane, Full Custom Print with Jerseys & Knicks Only	61.00	58.00	57.00	56.00	55.00
Fleece Leg Warmers	Nylon/Elastane, Full Custom Print with Jerseys & Knicks Only	57.00	53.00	52.00	51.00	50.00

ALL PRICES **INCLUDE** GST AND DELIVERY. NO EXTRA HIDDEN COSTS

**For pricing on quantities not listed, please enquire**

- \* 6 Easy Steps**
- \* 3 Ranges**
- \* All the Kit You Want**

TO CREATE YOUR UNIQUE CYCLE KIT at [www.bikegearnow.com](http://www.bikegearnow.com)

Need to talk to us

We are only a phone call away

**0418 382 330**

## templates

### Design Name

These Templates are offered to assist in you creating your design. Please save in ai or pdf Illustrator Ver. C5 or earlier. The VeloEx Logos are typically 9cm long and placed in the positions shown. Depending on your design, they can be located in more suitable positions. We are unable to supply clothing without VeloEx logos.

### Custom Cycle Clothing Templates



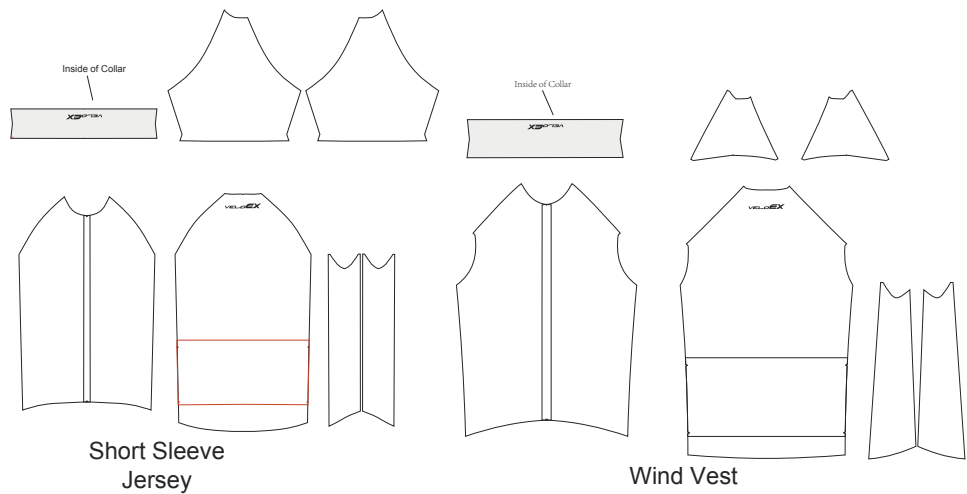
#### Artwork Guidelines

It is suggested all artwork be kept in from pattern edges by a minimum of 30mm, to aid visual appearance. Colours should be specified in CMYK palette or Pantone where possible. Please note Computer screen colours often vary between screens and even from the top to the bottom of the same screen

Patterns that cross panels can be more difficult to perfectly alignment. Incorporating the benefits of dissimilar fabrics into garments, for comfort and performance, can mean fabrics exhibit differing characteristics and colours when sewn.



All other Bib Knick Panels are made in Black Dyed Lycra, which cannot be printed. Whilst these panels can be made from white base lycra and fully printed, we do not recommend this approach. The centre pad area especially will show early signs of wear. Please advise us if you DO NOT WANT Black Dyed Panels



#### Standard Clothing Inclusions

**Jerseys**  
Full length hidden Zip  
Rear Gripper (Pro Jerseys)  
Mesh Side Panels (Pro Jerseys)

**Knicks**  
High Quality Pad (in all Knicks with High Density Pad in Pro Knicks)  
Leg Grippers  
Rear Double Security Pad (Pro Knicks)  
Centre Pad Panel dyed Black-non print area) for longer life unless specifically otherwise requested .

Colors

- \* 6 Easy Steps
- \* 3 Ranges
- \* All the Kit You Want

TO CREATE YOUR UNIQUE CYCLE KIT at [www.bikegearnow.com](http://www.bikegearnow.com)

Need to talk to us

We are only a phone call away

**0418 382 330**

# **VELODEX**

***by BikeGearNow.com***

**CUSTOM CYCLE KIT CATALOGUE 2018**

**Contact us now at:**

- ***bikegearnow@gmail.com***
- **0418 382 330**

**To start your unique cycling journey**

- \* **6 Easy Steps**
- \* **3 Ranges**
- \* **All the Kit You Want**

TO CREATE YOUR UNIQUE CYCLE KIT at ***www.bikegearnow.com***

Need to talk to us

We are only a phone call away

**0418 382 330**